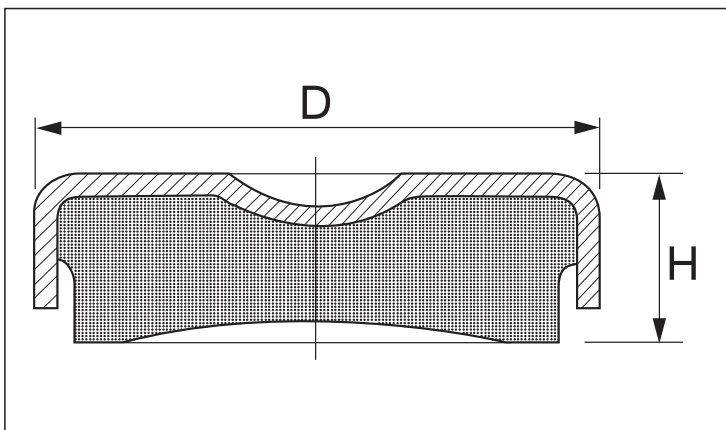


Mounting TFE™ is a simpler version of type TF™ without level adjuster. It is used for machines which do not require height adjustment or where such a feature is already provided, e.g. by an adjusting screw in the machine.



Both models also available in stainless steel.



| Type | Drawing no. | Part no. | Dimensions in mm | | Max Load (Kg) | Weight (Kg) |
|----------|-------------|----------|------------------|----|---------------|-------------|
| | | | D | H | | |
| TFE 601 | 19-0571 | 20-00629 | 80 | 25 | 800 | 0,375 |
| TFE 1201 | 19-0574 | 20-00630 | 109 | 29 | 160 | 0,925 |